

Carburetor Kits 146-0742 and 146-0743 for Micro (KY) Generator Sets

These kits provide a carburetor and gaskets for the 4.0 kW Micro (KY) generator sets. Kit 146-0742 must be used whenever a replacement carburetor is required to service engines which conform to 1995-1998 CARB exhaust emission standards. (Spec D and later). Kit 146-0743 is intended for use on Spec B and C generator sets. These sets are not CARB certified.

This installation will require removal of the genset housing. Consult the Service Manual for details.

⚠WARNING *Incorrect installation, service, or replacement of parts can result in severe personal injury and/or equipment damage. Service personnel must be qualified to perform electrical and mechanical service.*

PRELIMINARY

1. Disconnect the engine starting battery negative (-) cable.

⚠WARNING *Accidental starting of the engine during this procedure presents the hazard of severe personal injury or death. Make sure to disconnect the negative (-) battery cable before beginning.*

2. Close the fuel supply shutoff valve, and perform any necessary steps to gain adequate access to the engine.

CARBURETOR REMOVAL

⚠WARNING *Fuel presents the hazard of fire or explosion that can cause severe personal injury or death. Eliminate all possible ignition sources such as open flame, sparks, cigarettes, pilot lights, and arc-producing equipment like electrical switches from the work area and rooms with common ventilation. Keep a type ABC fire extinguisher nearby.*

1. Disconnect the fuel line and plug it to prevent fuel spill and fuel vapor accumulation. Disconnect the fuel solenoid leads.

⚠WARNING *Benzene and lead, found in some gasoline, have been identified by some state and federal agencies as causing cancer or reproductive toxicity. When working on fuel lines, take care not to ingest, breathe the fumes, or contact gasoline.*

2. Remove the air filter assembly (see Figure 1).
3. Remove the carburetor mounting screws from the intake elbow.
4. Close the choke and throttle plates by rotating their shafts in a counterclockwise direction. Pull the carburetor with its gaskets out slowly.
5. Disengage the governor and choke linkages from the carburetor (it may be necessary to remove the automatic choke assembly mounting screw to remove its linkage).

CARBURETOR INSTALLATION

1. Use a solvent to clean the carburetor mounting surface on the intake manifold and the surrounding area thoroughly.
2. Assemble the flange gasket to the carburetor adapter flange as shown in Figure 2 (Kit 146-0743 only).
3. Perform the assembly steps in reverse order of disassembly. Use the new gaskets from this kit between the intake elbow and the carburetor insulator, between the carburetor insulator and the carburetor, and between the carburetor adapter flange. Use the mounting screws and washers removed earlier in this procedure to mount the carburetor, insulator, gaskets and carburetor adapter flange to the intake elbow.

⚠ CAUTION ***Orient the two carburetor insulator gaskets precisely according to Figure 3 of this installation sheet. Incorrect installation can severely degrade engine operation.***

Torque the mounting bolts to 7-11 lb-ft (10-15 N-m). Do not use sealer on the gaskets. See Figure 3 for gasket arrangement and orientation.

4. Remount the air filter assembly and associated parts according to Figure 1. Remount the gen-set housing unless other work is planned. Consult the Service Manual if necessary.

This carburetor has been preadjusted at the factory and should not require further adjustment. However, if carburetor or fuel system adjustment or maintenance seem necessary, consult the Service Manual for this generator set.

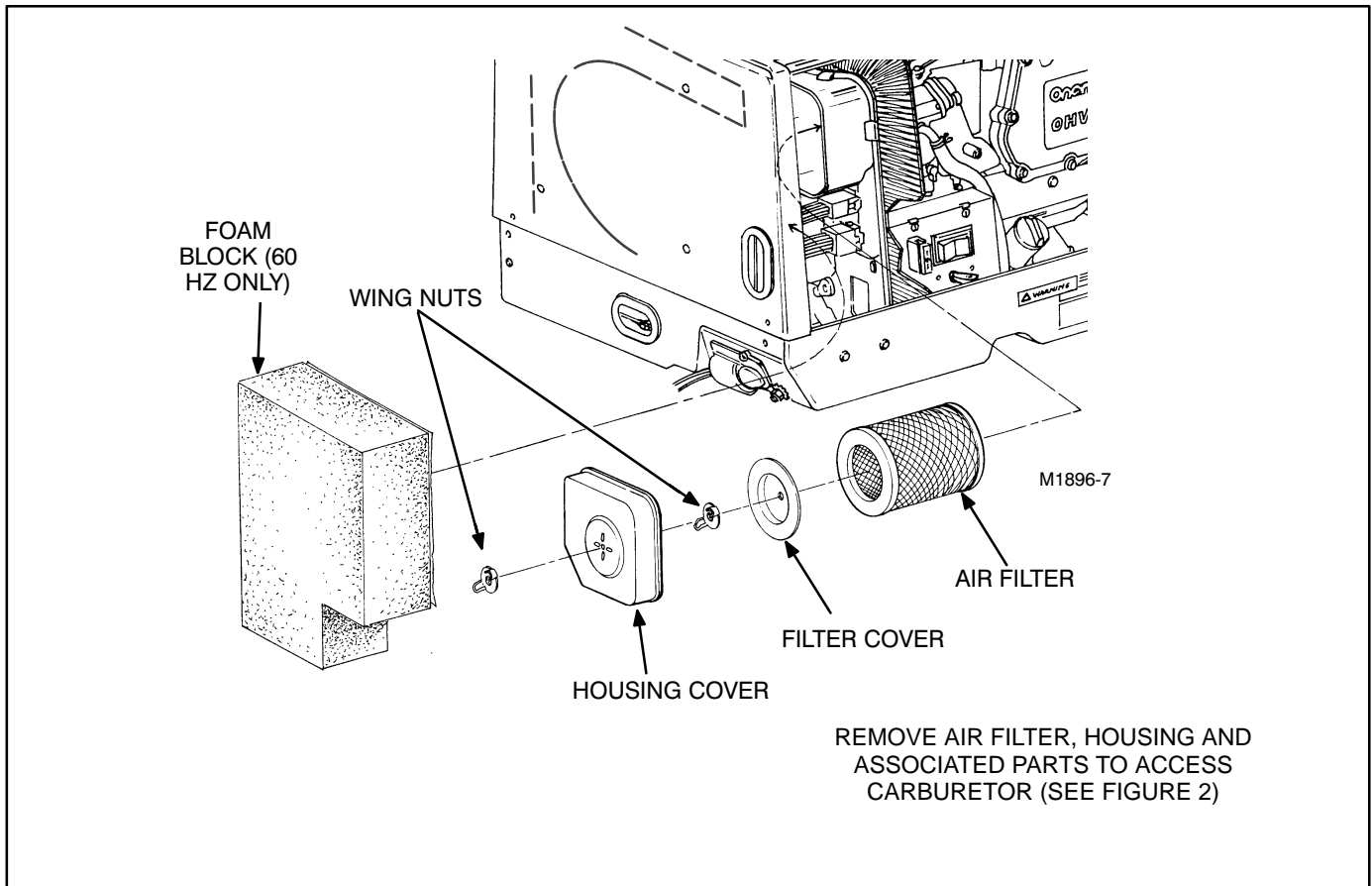


FIGURE 1. AIR FILTER AND PREHEATER ASSEMBLY

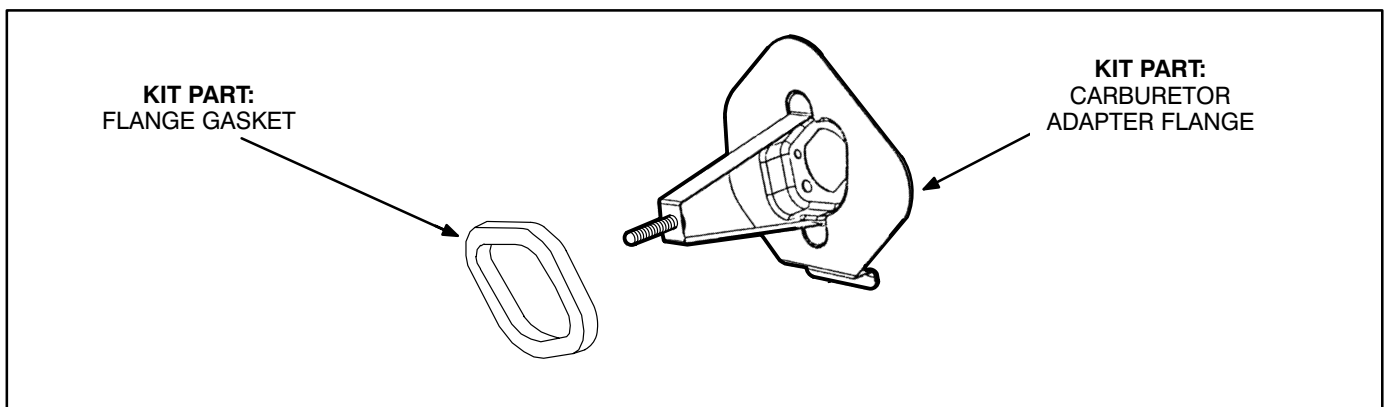


FIGURE 2. CARBURETOR ADAPTER ASSEMBLY (KIT 146-0743 only)

NOTE SIZE, SHAPE AND POSITION
OF DIFFERENT GASKETS IN KIT:
GASKETS MUST BE INSTALLED IN
DESIGNATED POSITIONS FOR
BEST GENSET PERFORMANCE

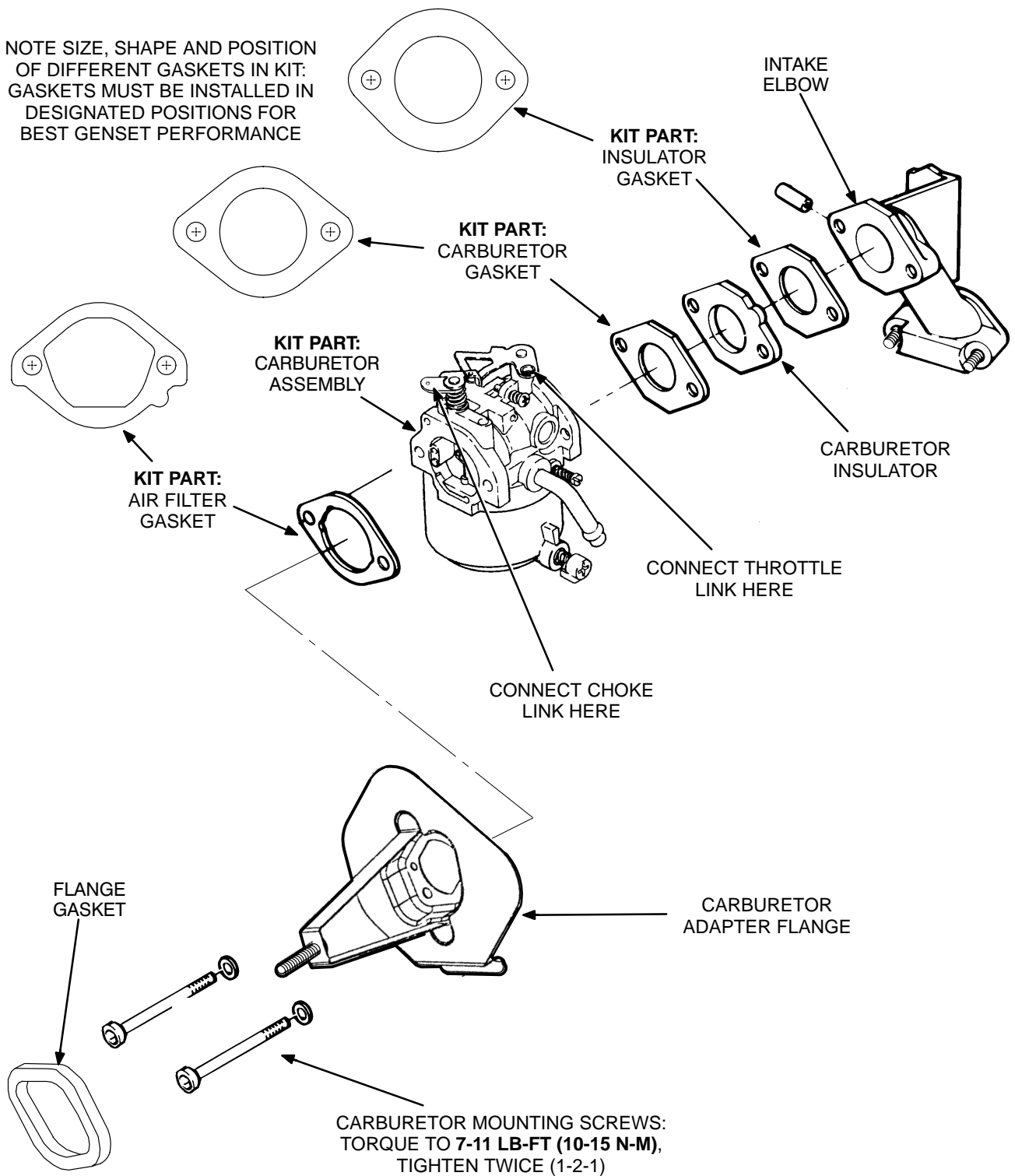


FIGURE 3. CARBURETOR AND INTAKE MANIFOLD ASSEMBLY